

Vulnerability Exposure

# The world's #1 vulnerability management solution

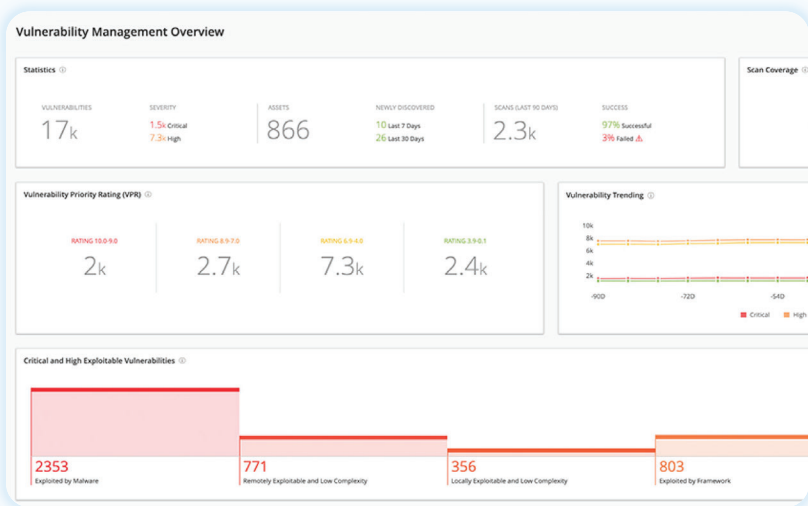


## Expose and close your cyber weaknesses with the world's #1 vulnerability management solution

Tenable Vulnerability Management gives you a risk-based view of your entire attack surface so you know all of your impactful IT vulnerabilities, expose your top priorities and close critical exposures at speed.

Powered by Nessus technology and managed in the cloud, Tenable Vulnerability Management provides the industry's most comprehensive vulnerability coverage with the ability to predict which security issues to remediate first. Using an advanced asset identification algorithm, Tenable Vulnerability Management provides accurate information about dynamic assets and vulnerabilities in ever-changing environments. As a cloud-delivered solution, its intuitive dashboard visualizations, comprehensive risk-based prioritization and seamless integration with third-party solutions help security teams maximize efficiency and scale for greater productivity.

Tenable Vulnerability Management is available as part of the Tenable One Exposure Management Platform or as a stand-alone product.



Tenable Vulnerability Management provides an accurate view of assets and vulnerabilities across your environment to help you prioritize remediation based on critical exposures.

## Key benefits

- ➔ **Know your vulnerabilities**  
Gain the full visibility you need to reveal the impactful vulnerabilities across your IT environment.
- ➔ **Expose priority gaps**  
Quickly spot priority exposures with a high likelihood of attack and business impact.
- ➔ **Close critical exposures**  
Take rapid, decisive action to close critical exposures and execute remediations.
- ➔ **Boost productivity**  
Run your initial assessments in less than 5 minutes with a SaaS-based solution.
- ➔ **Automate processes**  
Leverage a fully documented API and pre-built integrations to import third party data, automate scans and share data with your IT systems.
- ➔ **Maximize ROI**  
Eliminate double — or triple — counting of assets with multiple IP addresses by using the industry's first asset-based licensing model.

# Key capabilities

## Proactive threat contextualization

With Vulnerability Intelligence built into Tenable Vulnerability Management, you can search, contextualize and respond to vulnerabilities based on the industry's richest sources of data and intelligence provided by Tenable Research. By normalizing 50 trillion data points, Vulnerability Intelligence provides comprehensive deep dives on any given vulnerability. Identify key vulnerabilities that are leveraged in the wild or search for a specific vulnerability with natural language or advanced search.

## Optimized response

Prioritize asset exposures, monitor remediation trends and benchmark progress internally and against industry peers with Exposure Response in Tenable VM. Ensure that your vulnerability management program is efficient, goal-oriented and aligned with industry best practices by creating strategic initiatives that identify critical vulnerabilities to your organization. Mitigate those exposures by establishing SLAs for remediation that you can track and report progress against.

## Customer-friendly elastic asset licensing

Tenable Vulnerability Management offers a first-to-market asset-based licensing model that consumes just a single license unit per asset, even if the asset has multiple IP addresses. The solution's elastic model also continues to permit scanning when license counts are temporarily exceeded and automatically recovers licenses for rarely scanned assets or one-time bursts.

## Comprehensive assessment options

Tenable Vulnerability Management gives you unified visibility of your entire attack surface. It leverages Nessus Sensors, a mix of active scanners, agents, passive network monitoring, cloud connectors and CMDB integrations to maximize scan coverage across your infrastructure and reduce vulnerability blind spots. This mix of data sensor types helps you track and assess both known and unknown assets and their vulnerabilities, including hard-to-scan assets like transient devices analyzed by agents and sensitive systems like industrial control systems.

## Accurate asset-based vulnerability tracking

Tenable Vulnerability Management provides the ability to track assets and their vulnerabilities more accurately than any other solution in the industry. An advanced asset identification algorithm uses an extensive set of attributes (such as Tenable ID, NetBIOS name, MAC address and many others) to accurately identify and track changes to assets, regardless of how they roam or how long they last.

## Vulnerability prioritization based on actual risk

Tenable Vulnerability Management combines vulnerability data, threat intelligence and data science to give you an easy to understand risk score so you can prioritize vulnerabilities and know what to fix first. You can quickly assess exposures and identify vulnerabilities with the highest impact to your organization.

## Simplified vulnerability management

Through a modern interface with intuitive dashboard visualizations, Tenable Vulnerability Management makes common tasks, such as configuring scans, running an assessment and analyzing results, easier than ever. Pre-defined scan templates and configuration audit checks that follow best practices frameworks, such as CIS and DISA STIG, help you protect your organization with a fraction of the effort otherwise needed. Customize your reporting and analysis with pre-configured, out-of-the-box dashboards or quickly build your own from a blank canvas to meet organizational needs.

## Pre-built integrations and a documented API and integrated SDK

Tenable Vulnerability Management has pre-built integrations — called “plugins” — available for popular credential management, SIEM, ticketing systems and other complementary solutions, so you can easily build an efficient vulnerability management process. A complete listing can be found [here](#). Additionally, you can easily create your own integrations to Tenable Vulnerability Management by leveraging a fully documented API set and SDK. There is no extra cost to use these tools to maximize the value of your vulnerability data.

## SLA with uptime guarantee

Tenable provided the vulnerability management industry's first uptime guarantee through a robust service level agreement (SLA) for Tenable Vulnerability Management. Service credits are offered if the SLA is not met.

## PCI-certified approved scanning vendor

Tenable Vulnerability Management is a PCI-Certified Approved Scanning Vendor (ASV) solution that enables merchants and service providers to demonstrate their Internet-facing systems are secure, according to PCI Data Security Standard (PCI DSS) external network vulnerability scanning requirements.

## Backed by Tenable Research

Tenable Vulnerability Management is backed by Tenable Research, delivering world-class intelligence, data science insights, alerts and security advisories. Frequent updates from Tenable Research provide the latest vulnerability checks, zero-day research, and configuration benchmarks, helping you stay secure.

## About Tenable

Tenable® is the exposure management company, exposing and closing the cybersecurity gaps that erode business value, reputation and trust. The company's AI-powered exposure management platform radically unifies security visibility, insight and action across the attack surface, equipping modern organizations to protect against attacks from IT infrastructure to cloud environments to critical infrastructure and everywhere in between. By protecting enterprises from security exposure, Tenable reduces business risk for more than 44,000 customers around the globe. Learn more at [www.tenable.com](http://www.tenable.com).